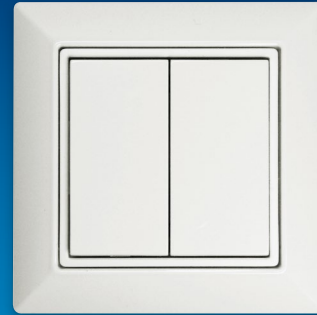
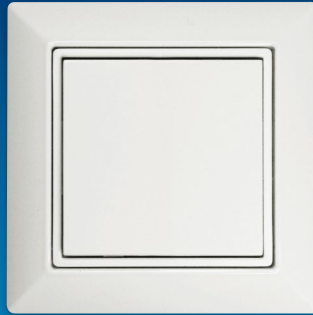


PHILIPS

Sensors

EasyAir

Philips EasyAir Switches



Switch commissioning procedure

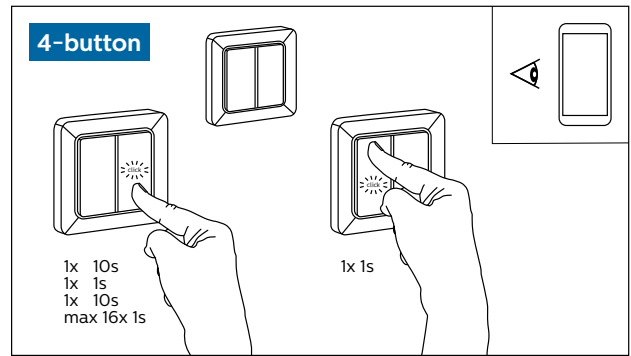
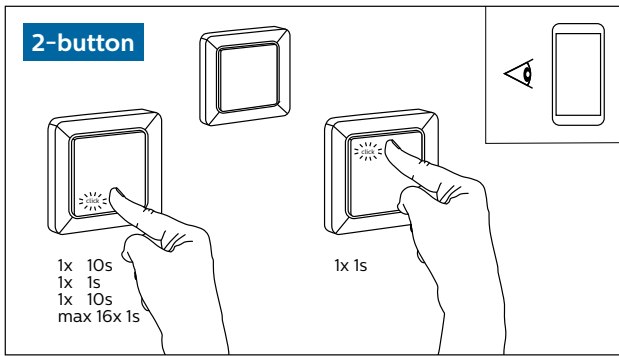
Switch commissioning procedure for Philips EasyAir switches

For commissioning this switch into a group, the cover does not need to be removed, and you may choose to work with any one of the buttons on the switch.

To be able to add this switch to a group, ensure that the group is open. Opening of a ZigBee group is possible using Philips Field Apps with either “Create group” or “Add to Group” options. Choose “Add switch”. Select the Philips EasyAir switch. Once this is done, please follow the steps given below:

1. Long press - Press and hold the chosen button* for 10 seconds
2. Short press - Press and hold the button* for 1 second
3. Long press - Press and hold the button* for 10 seconds
4. Now, perform a series of short presses of 1 second each with the button* until the luminaires blink. This should be done up to a maximum of 16 times and in one of the 16 presses, the channel will coincide with the luminaires and a feedback will be received.
5. After getting the luminaire feedback, complete the commissioning procedure by making a short press with any of the other buttons.
6. Close the group using Philips Field Apps with “Close group” option. Now the switch is successfully commissioned and added to the group.

* Irrespective of whether it is a dual button or a four-button switch, choose to work with any one of the buttons.



© 2020 Signify Holding. All rights reserved. The information provided herein is subject to change, without notice. Signify does not give any representation or warranty as to the accuracy or completeness of the information included herein and shall not be liable for any action in reliance thereon. The information presented in this document is not intended as any commercial offer and does not form part of any quotation or contract, unless otherwise agreed by Signify.

Philips and the Philips Shield Emblem are registered trademarks of Koninklijke Philips N.V. All other trademarks are owned by Signify Holding or their respective owners.

08/2020
Data subject to change

www.lighting.philips.co.uk/oem-emea/products/connected-lighting