

 **PIERLITE**<sup>®</sup>



**PIERLITE VANDALUX**  
PROVEN TOUGH.  
RAIL SPEC.

# A BRIGHT FUTURE.

With a 70-year history synonymous with the evolution of the lighting industry, Pierlite is recognised as the market leader in Australia and New Zealand for commercial, industrial and healthcare lighting systems.

Pierlite is leading the technology curve with the southern hemisphere's largest dedicated Lighting Innovation Lab. Our dedicated and experienced team of lighting designers, engineers and product specialists deliver cutting edge lighting solutions, agile product development, and comprehensive testing that exceeds Australian compliance standards, ensuring the highest quality to our customers.



# VANDALUX

## PROVEN TOUGH

The Australian designed Vandalux adverse weatherproof range have a proven and trusted history of vandalism areas.



---

*"There's a reason more industrial areas in Australia are illuminated by Vandalux than any other fitting. Without question, Vandalux is built to withstand adverse environments and has proven itself to be the best when it comes to reliability."*

**JASON WATKINS**, SENIOR CATEGORY MANAGER, PIERLITE.

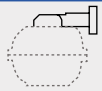
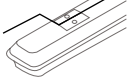
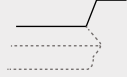

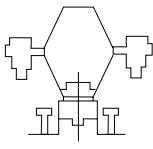

## STANDARD CODES

| CODE          | DESCRIPTION   | CODE          | DESCRIPTION  |
|---------------|---|---------------|--|
| <b>2 FOOT</b> |   | <b>4 FOOT</b> |  |
| VXOLS2D4PB    | Vandalux Opal Lumen Select 33W 2ft DALI 4000K Rail                | VXOLS4D4PB    | Vandalux Opal Lumen Select 53W 4ft DALI 4000K Rail                 |
| VXOLS2D4M4PB  | Vandalux Opal Lumen Select 33+3W 2ft DALI 4000K Maint EM 4hr RAIL | VXOLS4D4M4PB  | Vandalux Opal Lumen Select 53W+5W 4ft DALI 4000K Maint EM 4hr RAIL |

## CODE METHODOLOGY

| FITTING TYPE     | DIFFUSER | WATTAGE   | FITTING SIZE           | CONTROL GEAR | COLOUR TEMPERATURE | EMERGENCY                              | RAIL SPEC         |
|------------------|----------|---|------------------------|--------------|--------------------|--|-------------------|
| VX =<br>Vandalux | O = Opal | LS = Multi<br>Wattage<br>- Factory<br>default = 52W | 4 = 4 foot<br>(1310mm) | D= DALI      | 4 = 4000K          | M2 = Maintained<br>M4 = Maintained 4hr | PB = Rail<br>Spec |

## OPTIONAL MOUNTING TYPES

| MOUNTING BRACKET/ ACCESSORY          | PART NUMBER                     | MANUFACTURED FROM            | DRAWINGS  |
|--------------------------------------|---------------------------------|------------------------------|---|
| Horizontal Wall Mounting Bracket KIT | C29VANDALUX<br>(Double Bracket) | Cast                         |  |
| Catenary Wire Kit                    | C31VANDALUX                     | Aluminum                     |  |
| Universal Bracket                    | C35VANDALUX                     | Aluminum                     |  |
| Ceiling Mount Bracket                | C36VANDALUX                     | Aluminum                     |  |
| Pipe Clamp                           | PMB32/VAN                       | This is stainless steel only |  |
| Bracket                              | PMB40/VAN                       |                              |   |
| Wire Suspension Bracket              | C37VANDALUX                     | Aluminum                     |  |

## APPLICATIONS

- Train stabling yards
- Railway platforms
- Transport yards
- Maintenance pits
- Public amenities
- Unloading dump stations
- Car parks

## FEATURES

Two sizes available 4FT and 2FT



# WYNDHAM VALE STABLING YARDS



311x fittings installed at the Wyndham Vale Stabling Facility on catenary giving out excellent illumination results with uniform lighting throughout.

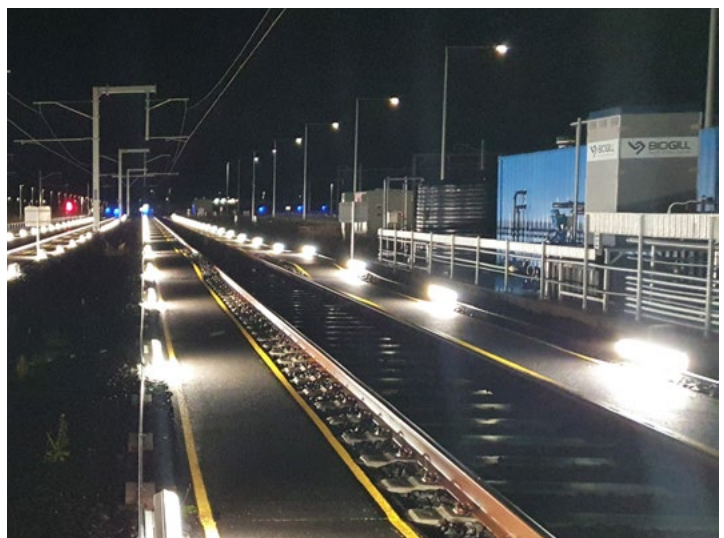


# PAKENHAM

## RAILWAY SIDINGS



614x fittings installed at the Pakenham Stabling yard 2ft above ground level on the sides of the tracks.



**NEW SOUTH WALES**  
NATIONAL HEAD OFFICE

Phone: 1300 799 300 | Fax: 1300 789 300  
96-112 Gow Street, Padstow NSW 2211  
Postal Address: PO BOX 314 Padstow NSW 2211

**QUEENSLAND**

Phone: 1300 799 300 | Fax: 1300 789 300  
54 Berwick Street, Fortitude Valley QLD 4006  
Postal Address: PO Box 500 Fortitude Valley QLD 4006

**VICTORIA/TASMANIA**

Phone: 1300 799 300 | Fax: 1300 789 300  
1/768 Lorimer Street, Port Melbourne VIC 3207

**SOUTH AUSTRALIA/NORTHERN TERRITORY**

Phone: 1300 799 300 | Fax: 1300 789 300  
Level 2, 191 Fullarton Rd, Dulwich SA 5065

**WESTERN AUSTRALIA**

Phone: 1300 799 300 | Fax: 1300 789 300  
77 Truganina Road, Malaga WA 6090  
Postal Address: PO Box 2046 Malaga, WA 6944



**1300 799 300 | PIERLITE.COM.AU**

Pierlite is a registered trademark of Gerard Lighting Pty Ltd ©Copyright Pierlite 2020. Gerard Lighting Pty Ltd and all directly related legal entities reserve the right to alter the specifications, designs or other features of any items herein and to discontinue any items at any time without notice and without liability.